

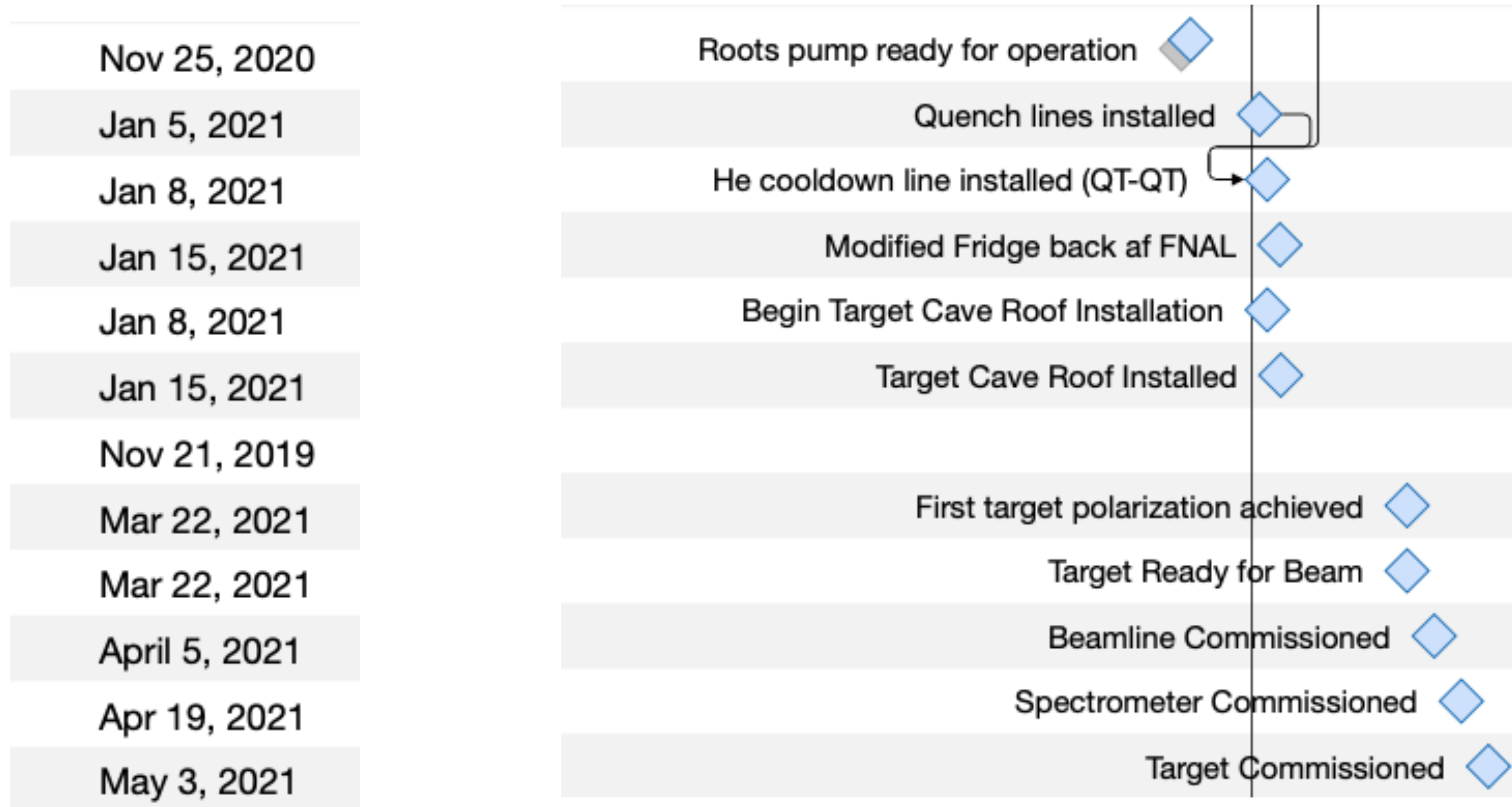
Target Schedule

SpinQuest Collaboration

D. Keller

Final Milestones

Assume no financial delays



Pre-beam Commissioning

Major cryogenic commissioning

- Sealed QT Commissioning: 4 weeks
- Polarized Target Commissioning: 2 weeks
- Beam-target Commissioning: 3 weeks (no target construction)

Expected Approach

SpinQuest Ramp up

- Push towards full target assembly as soon as we can
- Cave will be closed up no later than 1st week of May
- FNAL AD needs 2 weeks dedicated to beam tuning with no access
- We can then initiate non-target beam commissioning before 2021 SS
- Complete target/cryo-connections and safety review over SS
- Target-beam commissioning after SS
- Production data taking 2 months after SS