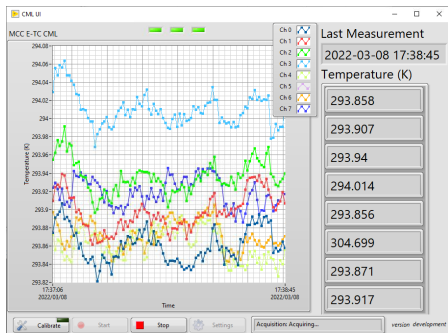


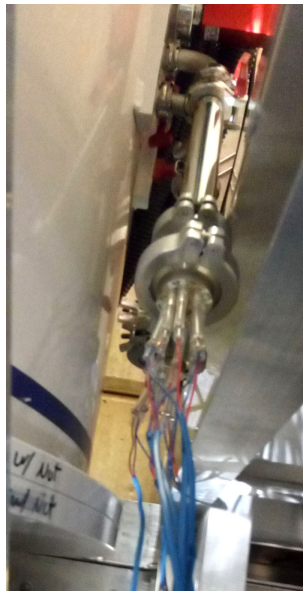
Thermocouple for Magnet Coil

- ▶ The KF pipes were re-arranged — page 2
 - ▷ Ready to be vacuumed
- ▶ All the TC cables were connected with insulators and tags — page 3
 - ▷ Will be inspected by Steve Chappa during next ORC planned by Waqar
- ▶ Remaining issue:
Found that TC #6 (one of the bottom TCs) is disconnected inside
 - ▷ Do we plan to open the top side of the target dewar soon?
- ▶ Readout: MCC E-TC @ slow control rack



- ▷ VI on target computer
- ▷ “Ch. 5” (i.e. TC #6) is hidden from chart
- ▷ The others look normal

- ▶ The KF pipes were rearranged

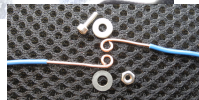
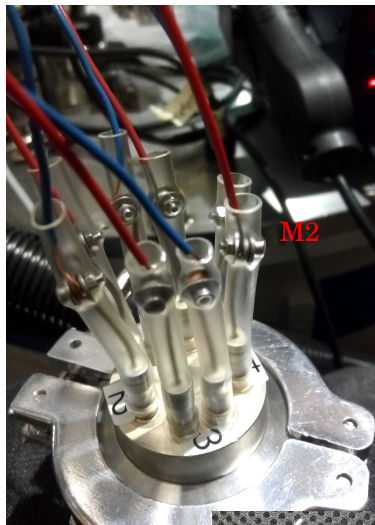


▶ TC cables were connected with insulators and tags

▷ Inside the feedthrough



▷ Outside the feedthrough



Cryo Control Panel

- ▶ The list of devices was updated and posted on Confluence page:

<https://confluence.its.virginia.edu/display/twist/Slow+Controls#SlowControls-CryoControlPanel:CCP>

- ▶ VIs

- ▷ Front panel — page 5
- ▷ Readings of MKS 722B and MKS 690 were activated
 - ▷▷ “740.7”, “742.3”, “1271.76” in page 5
 - ▷▷ Updated at 1 Hz
- ▷ Readings of obsolete devices were disabled and tagged with “1039”
 - ▷▷ To be replaced with new devices or deleted

- ▶ Plan next week

- ▷ Integrate THCD 400
- ▷ Set up the signal-emulation circuit for AMI 1700

CryoControls

