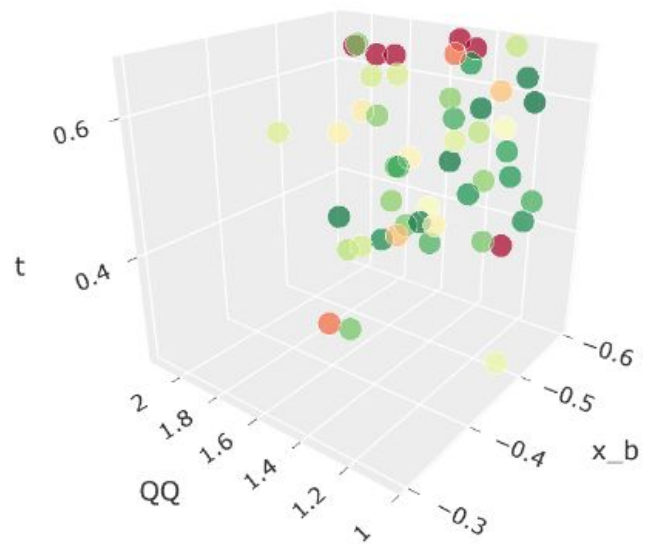


05/20/2022

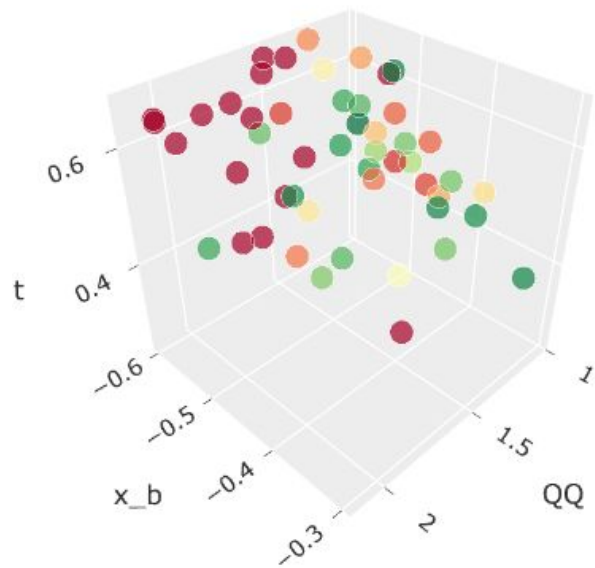
Aaryan

Plots for Accuracy

Prediction Accuracy on ReH with 5.0% Error on F

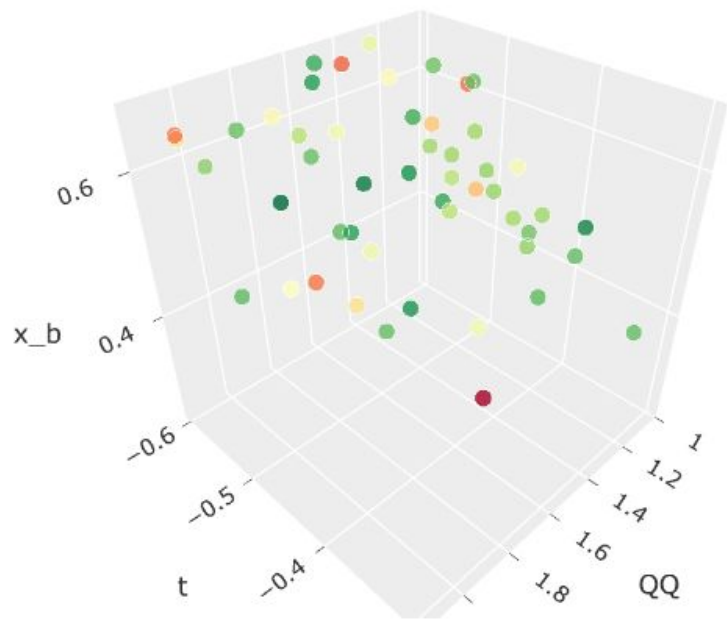


Prediction Accuracy on ReH with 30.0% Error on F

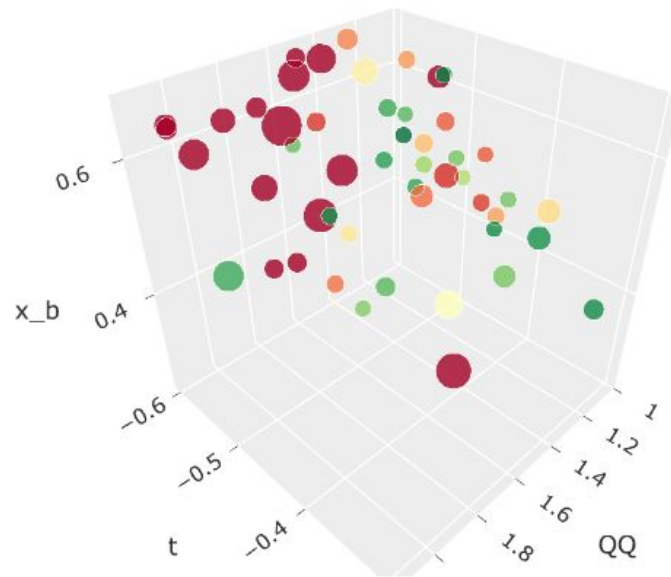


Plots to Capture Information about Spread

Prediction Accuracy on ReH with 0.0% Error on F

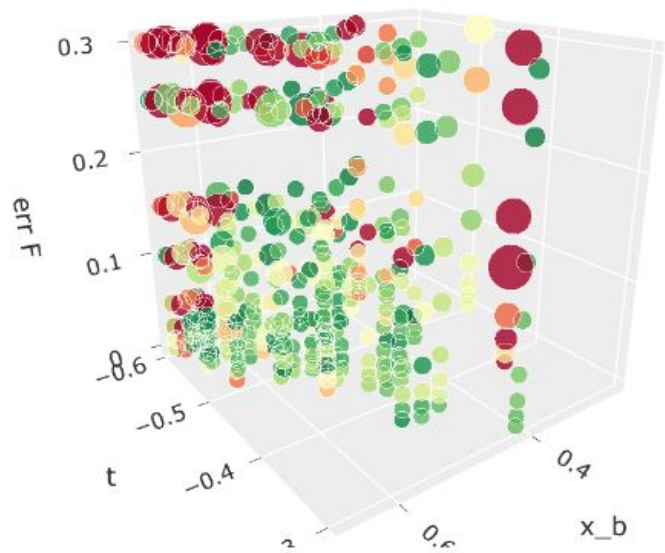


Prediction Accuracy on ReH with 30.0% Error on F



Plots without QQ, and last axis being errF

Model Performance on ReH with varying error on



Model Performance on ReE with varying error on F

