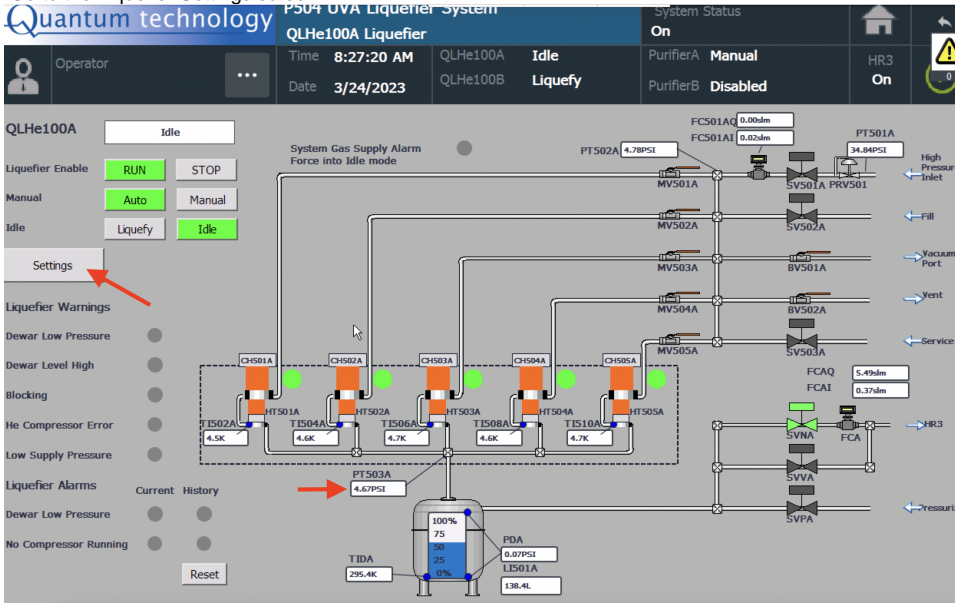


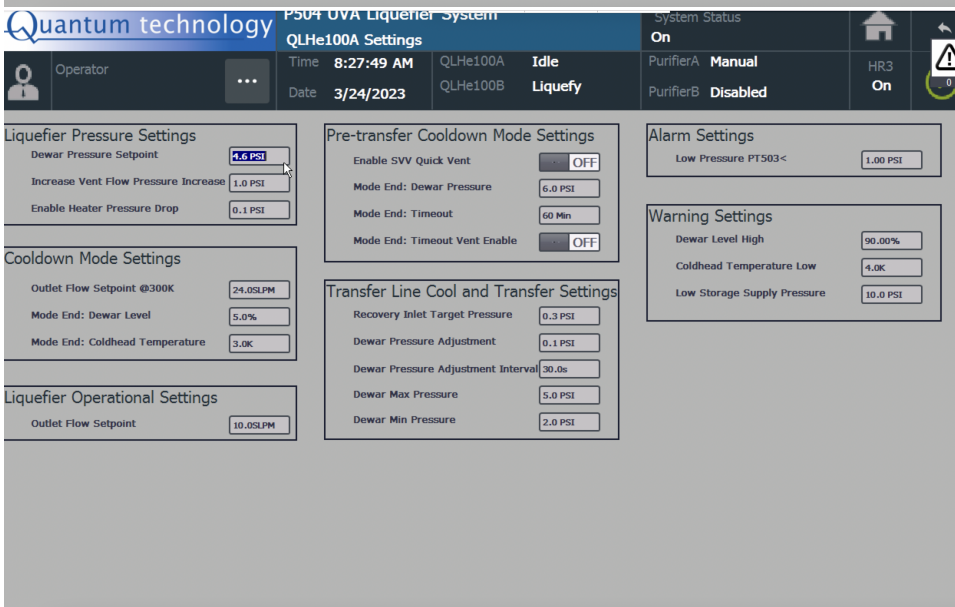
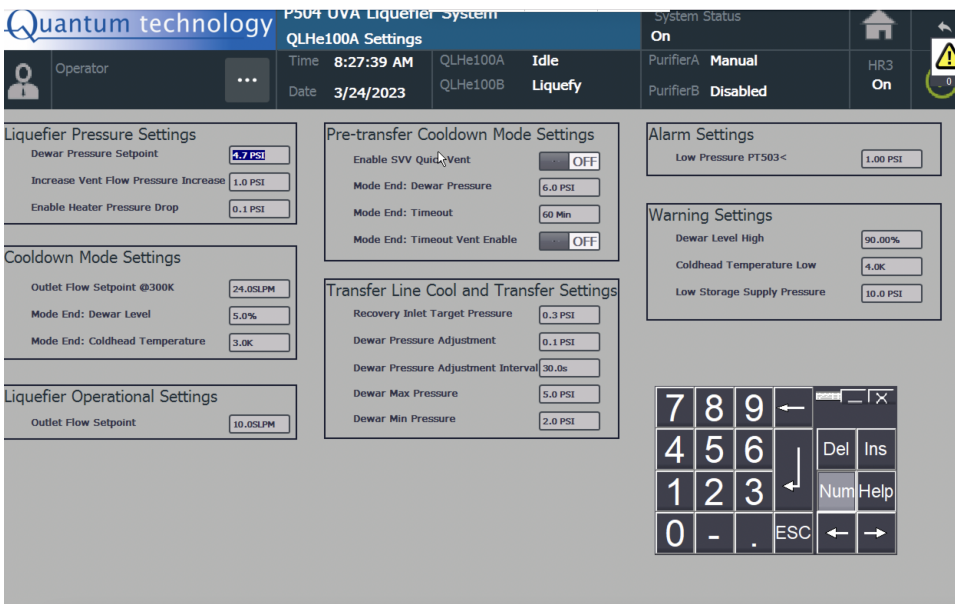
Bringing the Dewar Pressure down in Liquefy/Idle mode

Note: It will take about 10 mins to bring down the pressure by 0.1 psi.

1. Read the PT503 and remember that value for a moment.
2. Go to the Liquefier Settings screen



3. Change the Dewar pressure set point to 0.1 psi less than the value you read in Step 1.
Notice that you can set the "Enable Heater Pressure Drop" to 0.1 psi (Factory Settings is 0.5 psi)



- Wait for 10mins.
 - Repeat Steps 1-4 until you reach the pressure you wanted.
- See the following plot as an example.

